

WHENEVER AND WHEREVER

MARITIME
dry-docking & ship repairs

READY MADE DASHBOARD and
standard report for project reporting

360 PROJECT INSIGHT containing the
essential information stored for each
project



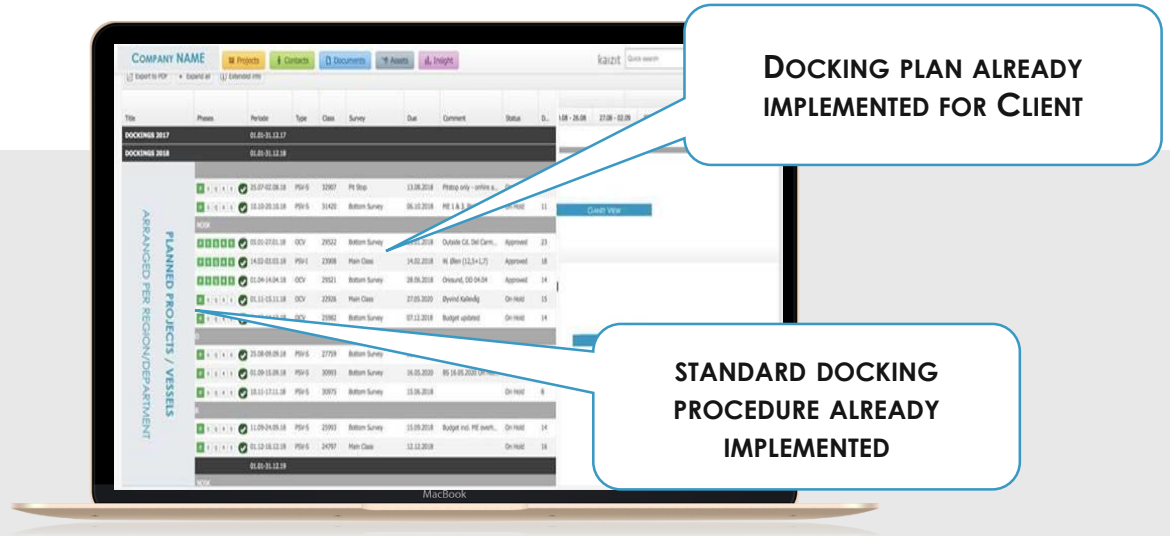
VesselMan - offers a fast, easy-to-implement and cost-efficient option to improving dry-docking ship repairs and other technical projects such as retrofitting. The system is designed in order to provide **DIGITAL STANDARD PROCESSES** that will improve the "ways of work". **DIGITALIZE THE EXECUTION** of complex projects with modules for assets management, safety, and the **UTILIZATION OF IOT AND BIG DATA**.

Ensure a crystal clear **RESPONSIBILITY** for deliveries and task during dry-docking, will have access to full fleet view dry-docking **SCHEDULE, TRACKING AND PROGRESS**

VESSELMAN

ACTING TODAY FOR A BETTER TOMORROW

Effective tracking & reporting



LOGIN

CONNECT WSM VESSELS AND FLEET through the cloud

INTERACTIVE AND EASILY track projects, key task, project performance, and customer interactions

DIGITALISATION and lean thinking opens new strategies for close partnerships and operational process support.

VESSELMAN ensures lean collaboration and effective, collaboration and **STANDARD** processes related to the dry-docking

TRANSPARENT in order to stay up to date with real-time insights from dashboards and reports

LEAN FLOW

Configure and roll out defined plans



RESPONSIBILITY

Ensure a crystal clear responsibility for deliveries and task

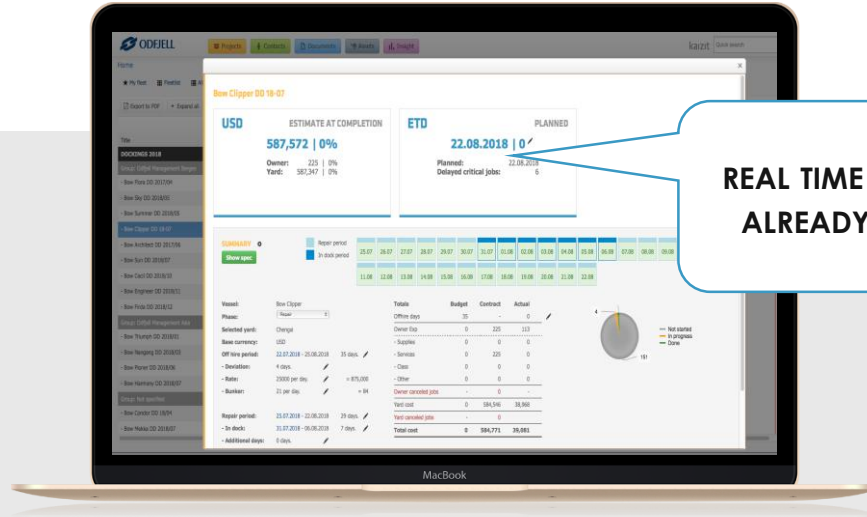


MANAGEMENT INSIGHT

Transparent dashboard with project activity, task and status.

TOOL THAT MAKES IT EASIER TO DO A GREAT JOB

Effective tracking & reporting



MULTI ACCESS

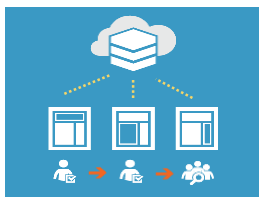
MANAGEMENT @ OFFICE dry-dockings and technical projects

IN CONTROL & EASY TO MANAGE standard process & Less people dependent with real time cost control on running project at yard and during planing

EASY TO USE AND EFFECTIVE CLOUD BASED SOFTWARE to support in order to keep track of project information, ensure follow up on activities in a systematic way and provide management information.

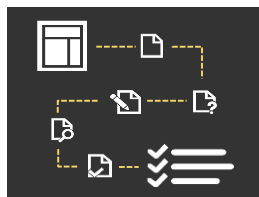
REDAY FOR INTEGRATED WITH PMS, work orders, purchases and components, integration that will save work and streamline dry-dockings project in a way that gives better control and transparency

DIGITAL COLLABORATION



An easy to use responsive user interface ensures smooth collaboration across your value chain

MASTERPLAN



Procedures are configured as templates that ensures all parties will follow a context-based and systematic flow

SPECIFICATION



A technical project is launched, staff and specialist identified, quotation, tracking and management reporting are managed

REPORTS



The solution provides insight reports and straight-forward dashboards for management and stakeholders.

SUPERINTENDENT & PROJECT MANAGER

MARITIME
dry-docking & ship repairs

ALWAYS 100% OVERVIEW

Projects are initiated based on
INTELLIGENT EVENTS,
ensuring everyone knows **WHAT TO
DO** and **HOW TO DO IT**



EASY TO DO A GREAT JOB coordinates and oversees
dry-docking activities on a daily basis

EFFECTIVE TRACKING & REPORTING closely
monitors the work along with problems that arise.

FOCUS ON operations and tracking of status at the yard

IMPROVED QUALITY (Re-usable specifications)

